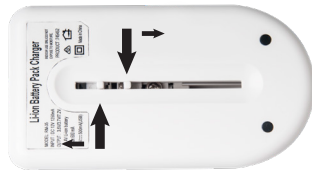


Picture 1.



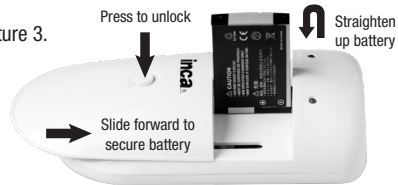
Place battery in position & connect pins to + & -

Picture 2.

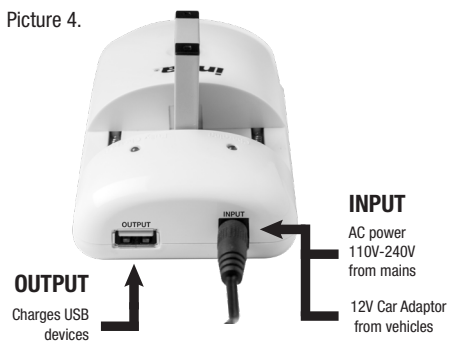


Adjust pins to + & - of battery

Picture 3.



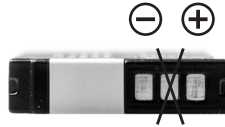
Picture 4.



OUTPUT
Charges USB devices

INPUT
AC power
110V-240V
from mains

12V Car Adaptor
from vehicles



Check polarity of battery contacts, this Universal Charger automatically detects '+' or '-' polarity

IMPORTANT

Contact pins must only connect with '+' and '-' contacts on battery

The manufacturer does not accept responsibility for any personal loss and/or injury if the defect was caused by misuse or mishandling by the user in anyway.

Batteries shown not included

inca[®]

www.inca.net.au



inca[®]

UNIVERSAL CHARGER

CHARGES
LI-ION BATTERIES
AND USB DEVICES



745453 RM-42

This Charger is designed to re-charge most Lithium (Li-ion) re-chargeable Battery Packs ONLY. It is compatible with most 3.6V/3.7V & 7.2V/7.4V Digital Camera, Camcorder & Mobile phone Lithium Battery Packs. Will also re-charge external USB devices that use a USB charging cord. Please note that this Charger must not be used with Alkaline, Carbon Zinc, Nickel-Metal Hydride (Ni-Mh) or Nickel Cadmium (Ni-Cad) Batteries. Attempting to charge other types of batteries or devices could cause personal injury and/or damage the Charger.

Before use, please read the Operating and Safety Instructions below carefully.

Features:

1. Re-charge USB devices, Smartphones and Tablets that use USB charging cord.
2. Simultaneously re-charge Lithium Batteries and a USB device.
3. Slide and Lock battery cover for ease of use.
4. LED Red Light indicates charging mode.
5. LED Green Light indicates "Full Charged" status.
6. LED Red & Green Light indicates:
defective battery (Refer Picture 4).
7. Automatic Max Battery Voltage cut off.
8. Auto detect Reverse-polarity ("+" and "-").
9. Automatic Voltage Change (100V – 240V).

Operating and Safety Instructions

Re-Charging a Li-ion Battery Pack:

1. Slide open the Charger cover and lock in position.
2. Place Lithium Battery Pack on the charger base.
(Refer Picture 1).
3. Slide connecting pins left and right from the underside to adjust the pins to the battery polarities "+" and "-" (Refer Picture 2).
4. After adjusting to correct position, straighten up the battery (Refer Picture 3).
5. Unlock the cover to secure the battery in position.
6. Plug the external AC Adaptor into the mains outlet and connect to the "Input" port of charger (Refer Picture 4).
7. LED Red Light indicates re-charging in progress.
8. LED Green Light indicates re-charging is complete.
9. LED Red and Green Light indicates error or defective battery.
10. After charging is completed, unplug the AC Adaptor.

Re-Charging a USB device:

1. Connect USB electronic device to USB "Output" port (Refer Picture 4).
2. Other Batteries may be charged at the same time.
3. Plug the external AC Adaptor into the mains outlet and connect to "Input" port of the Charger (Refer Picture 4).
4. After charging is completed, unplug the AC Adaptor.

Important Safety Instructions:

- This Charger is intended for use with Lithium-ion (Li-ion) rechargeable batteries ONLY. Please note that this charger must not be used with Alkaline, Carbon Zinc, Nickel-Metal Hydride (Ni-Mh) or Nickel Cadmium (Ni-Cad) Batteries. Attempting to charge any other types of batteries will cause personal injury and/or damage the Charger.
- Do not expose the Charger or Adaptors to water or moisture.
- Do not expose the Charger to excessive heat or fire.
- Designed and intended for indoor use only.
- Keep the Charger out of reach of children.
- Allow adequate ventilation when in use. Charger and batteries may get warm during re-charging, this is normal.
- Do not short circuit the contact pins.
- Keep all contacts and pins clean.
- Do not apply excessive force when connecting or disconnecting batteries to contacts.
- Do not operate the Charger if it has been subjected to shock or damage. If subjected to shock or damage, have it serviced by a qualified service technician.
- Do not disassemble the Charger. Incorrect reassembly may result in a risk of electrical shock or fire.
- Unplug the Charger from all power sources after use and before attempting maintenance or cleaning.
- Do not leave any batteries which are still connected to the Charger when not charging.
- **Do not attempt to charge leaking, corroded or dead batteries**