

# Phottix® Kali600

## Studio LED Honeycomb



The Kali600 Honeycomb Grid helps you gain more control over the Kali600 Studio LED. Using the grid can help feather hard light for a more attractive shadow, as well as being used for adding depth to fashion images and emphasizing the model's facial structure.

PH81440 Phottix Kali600 Studio LED  
PH20600 Phottix Kali600 Studio LED Honeycomb

## Tame your Kali600!

New for the Phottix Kali600 Studio LED – a 30 degree honeycomb grid to help control light and spill. The Kali600 Honeycomb Grid attaches easily to the Kali600 Barndoors, and is perfect for adding a dramatic touch to video, portrait or product photography.

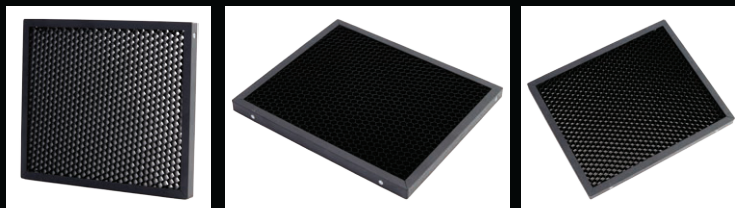
### Features:

- 30 degree Honeycomb Grid
- Connects easily to the Phottix Kali600 Barndoors
- Lightweight and compact
- Creative tool for drama and special lighting effects



### Kali600 Studio LED Honeycomb Technical Specs:

SKUs / Model:	PH20600 Phottix Kali600 Studio LED Honeycomb
Dimensions:	215mm x 180mm x 15mm (8.46" x 7.09" x 0.59")
Weight:	0.123Kg



It can also create a spotlight-type glow with defined borders, and helps eliminate unwanted spill. Creative uses of the Kali600 Honeycomb Grid include background effects, casting shadows, sharp color projection and edge/rim lighting.

### What's included:

Kali600 Honeycomb Grid

### Kali600 Studio LED Technical Specs:

SKUs / Model:	PH81440 Phottix Kali600 Studio LED
Color Rendering Index (CRI):	> 95
Color Temperature (adjustable):	3300K~5600K
Maximum Brightness:	3000Lux @ 1m
Power:	36W @ full power
Battery:	2 x Compatible NP Series (NP-F550 / 750 / 960)
Battery Life:	2 x NP-F550 (2000mAh) 85min at full power @ 5600K color
Remote Control Range:	>50m
Dimensions:	242mm x 191mm x 42mm (9.5" x 7.5" x 1.7")
Weight:	1340g (not include battery / barndoor)
AC/DC adaptor operation voltage:	100-240VAC