

# Cerberus

Griffin Multi Mount

PH87307 Mount multi Cerberus



## Cerberus Multi Mount Holder (Griffin)

The durable and patented Phottix Griffin Universal Flash Mount holds many popular hot shoe flash models secure in a synthetic-lined spring-loaded clamp. The system was designed to be both durable and easy to use.

The Phottix Cerberus Multi Mount has three mount compatibility options:

1. The standard round mount (included) works with the range of Phottix Easy-Folder Softboxes.

Or add

2. The Bowen-compatible mount allows traditional S-Mount compatible accessories to be used with your hot shoe flash.

Sold separately (PH87301 - includes mounting screws)

Or add

3. The Elinchrom-compatible mount for use with Elinchrom's vast array of accessories and your hot shoe flash.

Sold separately (PH87302 - includes mounting screws)

\* Note: The Phottix Griffin Mount with this set is affixed to the Phottix Easy-Folder Softbox Mount and cannot be removed.



PH87301



PH87302

## Cerberus

### Multi Mount System

#### PH87300 Cerberus Multi Mount Kit

The Phottix Cerberus Multi Mount has three system mount possibilities. The standard round mount works with the range of Phottix Easy-Folder Softboxes. Add the Bowen-compatible mount and traditional S-Mount compatible accessories can be used with your hot shoe flash. Swap that out for the Elinchrom-compatible mount and use Elinchrom's vast array of accessories with your hot shoe flash.

The Cerberus system comes with:

- Phottix Griffin with Phottix Easy-Folder-Compatible Mount
- Phottix Varos Pro BG \*
- Cerberus Elinchrom-Compatible Mount
- Cerberus Bowens-Compatible Mount

The durable and patented Phottix Griffin Universal Flash Mount holds many popular hot shoe flash models secure in a synthetic-lined spring-loaded clamp. The system was designed to be both durable and easy to use. A Phottix Varos Pro BG Umbrella Adapter is included to mount the Phottix Cerberus Multi Mount to a light stand or boom.



Speed-lights not included



#### What's in the box:

Phottix Griffin with Phottix Easy-Folder-Compatible Mount and Phottix Varos Pro BG \*

Cerberus Elinchrom-Compatible Mount

Cerberus Bowens-Compatible Mount

Allen Key

Carrying Bag



PH87307



PH87198



PH87301



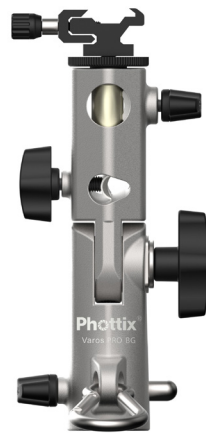
PH87302

\* Note: The Phottix Griffin Mount with this set is affixed to the Phottix Easy-Folder Softbox Mount and cannot be removed. Varos Pro BG does not come with metal Coldshoe and male 3/8" and 1/4 " screw.

## Cerberus

Griffin Multi Mount  
Includes Varos Pro BG

PH87305 Cerberus & Varos Pro BG Griffin Holder



With transfolder fitted  
Transfolder sold separately\*\*

## Cerberus Multi Mount Kit for Use with Transfolder Softbox

Combining the Phottix Griffin Universal Flash Mount and an Transfolder Mount – this Phottix Cerberus Multi Mount Kit\* makes using Transfolder Softboxes easier.

Using the Elinchrom or Bowens-compatible mounts (sold separately) the Phottix Cerberus can mount three different softboxes and accessories.

The durable and patented Phottix Griffin Universal Flash Mount holds many popular hot shoe flash models secure in a synthetic-lined spring-loaded clamp. The system was designed to be both durable and easy to use.

### What's in the box:

- Phottix Varos Pro BG – Without metal Coldshoe and male 3/8" and 1/4" screw
- Phottix Griffin with Phottix Transfolder-Compatible Mount
- Carrying Bag
- Allen Key
- Carrying Bag

Note: The Phottix Griffin Mount with this set is affixed to the Phottix Easy-Folder Softbox Mount and cannot be removed.

Weight: 0.7kg

\*\*Transfolders available: PH82521 (40x40cm), PH82523 (60x60cm), PH82527 (80x80cm)